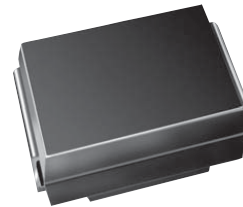




Surface Mount Ultrafast Plastic Rectifiers

Major Ratings and Characteristics

$I_{F(AV)}$	2 A
V_{RRM}	100 V, 150 V, 200 V
t_{rr}	25 ns
V_F	0.93 V
$T_J \text{ max.}$	175 °C



DO-214AA (SMB)

Features

- Glass passivated chip junction
- Ideal for automated placement
- Ultrafast recovery times for high efficiency
- Low forward voltage, low power loss
- High forward surge capability
- Meets MSL level 1 per J-STS-020C
- Solder Dip 260 °C, 40 seconds



Mechanical Data

Case: DO-214AA (SMB)

Epoxy meets UL 94V-0 Flammability rating

Terminals: Matte tin plated leads, solderable per J-STD-002B and JESD22-B102D

E3 suffix for commercial grade, HE3 suffix for high reliability grade (AEC Q101 qualified)

Polarity: Color band denotes cathode end

Typical Applications

For use in high frequency rectification and freewheeling application in switching mode converter and inverter for both consumer and automotive

Maximum Ratings

$T_A = 25 \text{ °C}$, unless otherwise specified

Parameter	Symbol	ESH2B	ESH2C	ESH2D	Unit
Device marking code		EHB	EHC	EHD	
Maximum repetitive peak reverse voltage	V_{RRM}	100	150	200	V
Maximum RMS voltage	V_{RMS}	70	105	140	V
Maximum DC blocking voltage	V_{DC}	100	150	200	V
Maximum average forward rectified current (Fig. 1)	$I_{F(AV)}$	2.0			A
Peak forward surge current 8.3 ms single half sine-wave superimposed on rated load	I_{FSM}	60			A
Operating junction and storage temperature range	T_J, T_{STG}	- 55 to + 175			°C

Electrical Characteristics

$T_A = 25\text{ }^\circ\text{C}$, unless otherwise specified

Parameter	Test condition	Symbol	Value	Unit
Maximum instantaneous forward voltage	at $I_F = 2\text{ A}^{(1)}$	V_F	0.93	V
Maximum DC reverse current at rated DC blocking voltage	$T_A = 25\text{ }^\circ\text{C}$ $T_A = 125\text{ }^\circ\text{C}$	I_R	2.0 50	μA
Maximum reverse recovery time	at $I_F = 0.5\text{ A}$, $I_R = 1\text{ A}$, $I_{rr} = 0.25\text{ A}$	t_{rr}	25	ns
Typical reverse recovery time	at $I_F = 2\text{ A}$, $V_R = 30\text{ V}$ di/dt = $50\text{ A}/\mu\text{s}$, $I_{rr} = 10\%$ IRM $T_J = 25\text{ }^\circ\text{C}$ $T_J = 100\text{ }^\circ\text{C}$	t_{rr}	35 55	ns
Typical stored charge	at $I_F = 2\text{ A}$, $V_R = 30\text{ V}$ di/dt = $50\text{ A}/\mu\text{s}$, $I_{rr} = 10\%$ IRM $T_J = 25\text{ }^\circ\text{C}$ $T_J = 100\text{ }^\circ\text{C}$	Q_{rr}	20 35	nC
Typical junction capacitance	at 4.0 V, 1 MHz	C_J	30	pF

Note:

(1) Pulse test: 300 μs pulse width, 1 % duty cycle

Thermal Characteristics

$T_A = 25\text{ }^\circ\text{C}$, unless otherwise specified

Parameter	Symbol	ESH2B	ESH2C	ESH2D	Unit
Typical thermal resistance ⁽¹⁾	$R_{\theta JA}$ $R_{\theta JL}$		65 20		$^\circ\text{C}/\text{W}$

Note:

(1) Units mounted on P.C.B. with 8.0 x 8.0 mm land areas.

Ratings and Characteristics Curves

($T_A = 25\text{ }^\circ\text{C}$ unless otherwise specified)

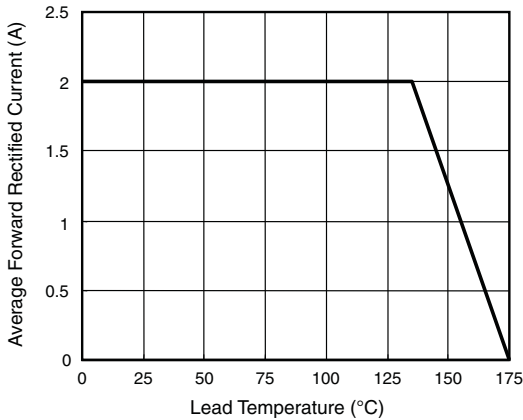


Figure 1. Maximum Forward Current Derating Curve

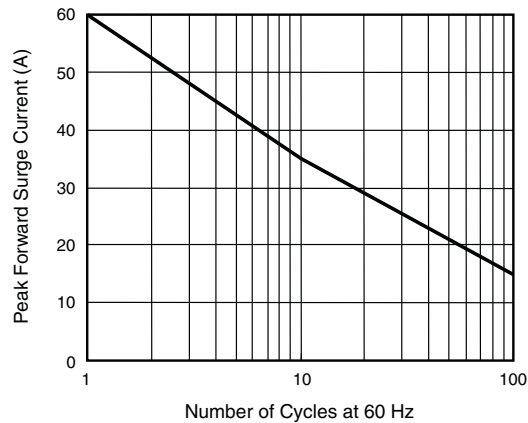


Figure 2. Maximum Non-Repetitive Peak Forward Surge Current

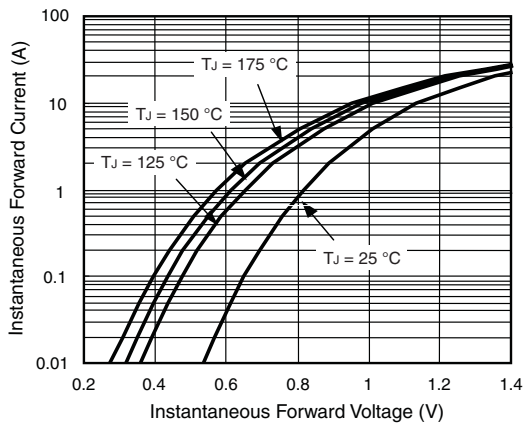


Figure 3. Typical Instantaneous Forward Characteristics

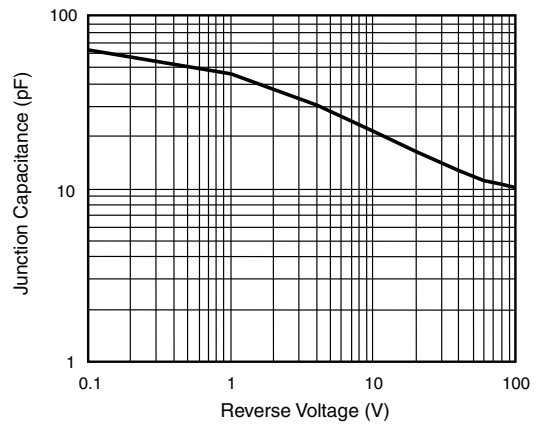


Figure 5. Typical Junction Capacitance

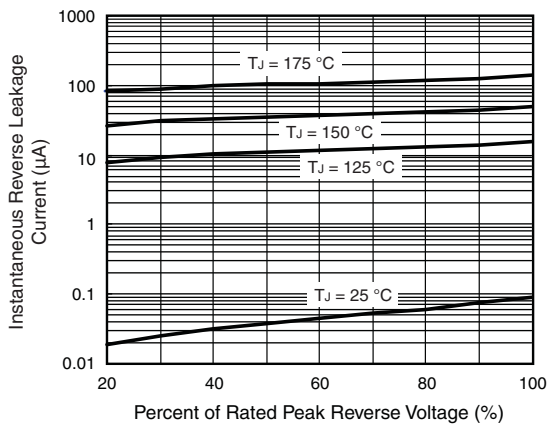


Figure 4. Typical Reverse Leakage Characteristics

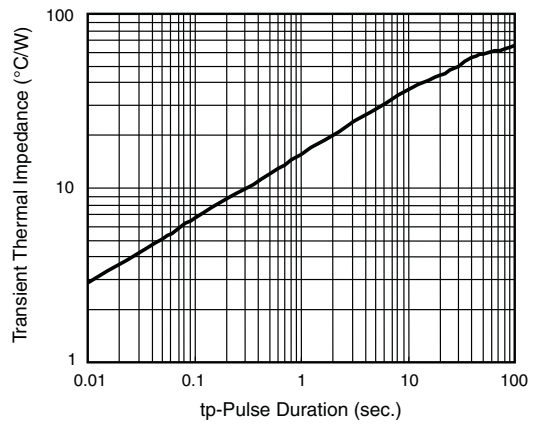
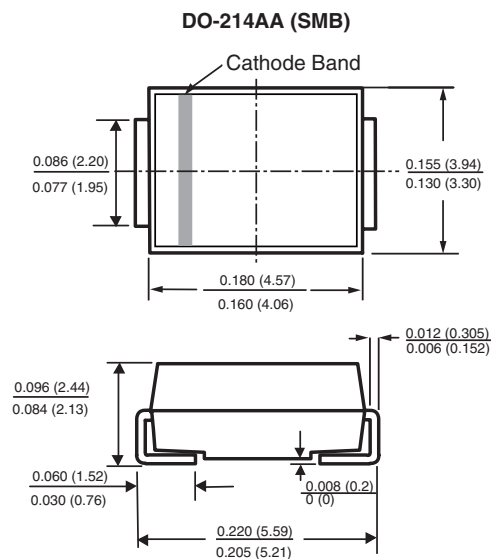
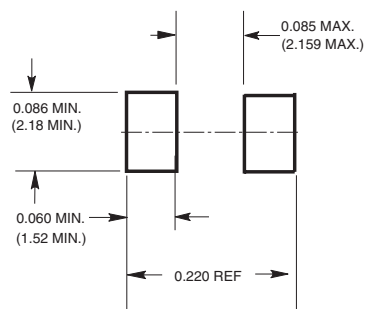


Figure 6. Typical Transient Thermal Impedance

Package dimensions in inches (millimeters)



Mounting Pad Layout





Notice

Specifications of the products displayed herein are subject to change without notice. Vishay Intertechnology, Inc., or anyone on its behalf, assumes no responsibility or liability for any errors or inaccuracies.

Information contained herein is intended to provide a product description only. No license, express or implied, by estoppel or otherwise, to any intellectual property rights is granted by this document. Except as provided in Vishay's terms and conditions of sale for such products, Vishay assumes no liability whatsoever, and disclaims any express or implied warranty, relating to sale and/or use of Vishay products including liability or warranties relating to fitness for a particular purpose, merchantability, or infringement of any patent, copyright, or other intellectual property right.

The products shown herein are not designed for use in medical, life-saving, or life-sustaining applications. Customers using or selling these products for use in such applications do so at their own risk and agree to fully indemnify Vishay for any damages resulting from such improper use or sale.